

Mesin Jam Tower - Outdoor

Mesin Jam Menara untuk Media Luar Ruang

Kegunaan : UNTUK PEMBUATAN JAM MENARA – JAM TOWER
Mesin Jam Tower Clock Outdoor – Kuat dan Tahan Air



GFClock Yasa Persada

Showroom : Parkir Masjid Jami Al-Fajri
Jl. Masjid Alfajri No.17 Pejaten Barat - Pasar Minggu - Jakarta Selatan
12510
Telp. +62-21-41518840 ; 70978302

Office : Graha Mobisel 1st Floor
Jl. Mampang Prapatan Raya No.139 - Jakarta Selatan 12740
Telp. +62-21-7975555 Ext.6049

Workshop : Jl. Masjid Alfajri No.11/44 Pejaten Barat – Pasar Minggu
Jakarta Selatan 12510
Telp. +62-828-7790027

Phone : +62-21-98529616 E-mail : anggono@gfclock.com
+62-21-79170265 MSN : baszukv@hotmail.com

Fax : +62-21-79170265 YM : baszukv@yahoo.com

Website : <http://www.gfclock.com> Contact : MR.ANGGONO BASUKI
HP. : 0818-802045

Blackberry: 2880ECDC
29B48D7C

Contents

MESIN JAM TOWER - OUTDOOR.....	1
GFCLOCK YASA PERSADA.....	1
CONTENTS	2
MESIN JAM TOWER CLOCKS – OUTDOOR CLOCK MOVEMENT	3
GFA SERIES FOR 1 – 6 METER DIAMETER	3
GFC SERIES FOR 1 – 6 METER DIAMETER	7
MOVEMENT MODEL EXPLANATION.....	11

Mesin Jam Tower Clocks – Outdoor Clock Movement

GFA Series for 1 – 6 Meter Diameter

Two hands: Hour and Minute



Available for 1 – 6 Meter diameter of Dial

- Micro-processor based self-setting movement
- Ideal for open-air tower clock system
- All metal fabric with stepping motor
- Remote control enabled
- Compact design with multiple functions

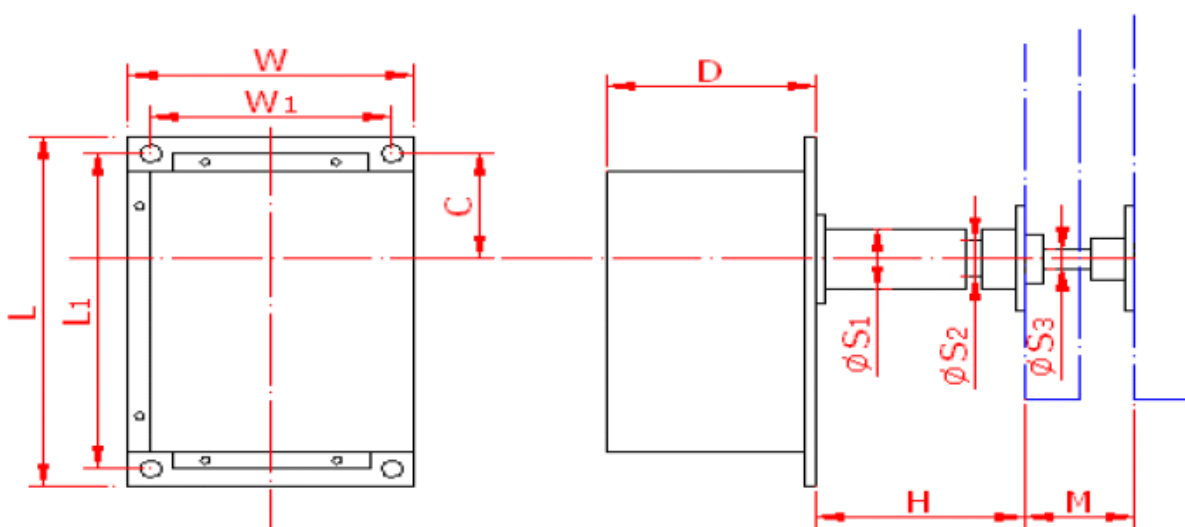
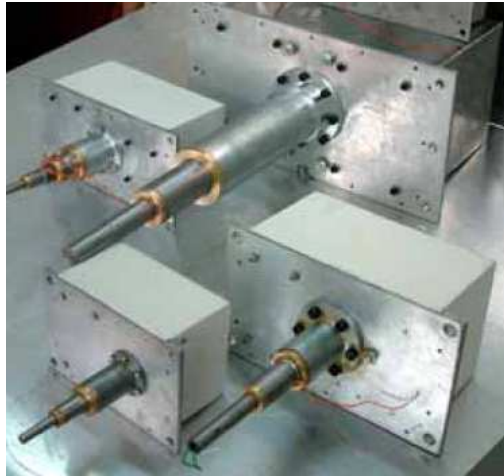
FEATURES

Microprocessor based open-air tower clock movement
Suitable for open-air dial diameter from 1.2m to 12m
Self-setting with master clock upon power recovery from failure
Controlled & synchronized by master clock or PC connected
Operation reservation upon power failure
High efficiency with low power consumption
Applicable with or w/o master clock and UT tower clock software

Clock Solutions

- OUTDOOR-USE DESIGN** : - Entirely metal fabric from internal parts to outer case (GFA12 is exceptional with ABS outer case)
- Dust-proof, anti-rust, and weather-resistant
- LOW CONSUMPTION** : - Lower power consumption by 50%
- HIGH EFFICIENCY** : - Cylinder & gears design enables high efficiency with low abrasion
- SELF-SETTING** : - Automatically synchronized with master clock
- TIME RESERVATION** : - 3 months' operation reservation enables auto correction to master clock's time on power recovery from a mains power failure
- WIRING INTERFACE** : - Ordinary double-twisted pair wire
- RS485 output & input
- REMOTE OPERATION** : - Central supervised and controlled with master clock or PC
- No operation on movement needed
- Wiring distance to master clock or PC up to 1200m
- Feedback running status to master clock or PC
- TIME ACCURACY** : - 0.3 s/d at 25° (independent)
- HANDS ILLUMINATION** : - Hollow shafts design enables LED
- OTHER PARAMETER** : - Power supply DC 12V
- Shafts Hour & minute
- Working Temp. -30 – 85°
- Humidity 0 – 95%

DIMENSIONS



MODEL	W	W1	L	L1	D	C	S1	S2	S3	H	M
GFA12S	67	-	99	-	50	27	15	7	-	25	15
GFA25N	130	110	200	180	95	60	34	21	11	95	50
GFA25L	130	110	200	180	95	60	34	21	11	230	50
GFA40N	150	130	230	210	100	68	58	33	16	124	65
GFA40L	150	130	230	210	100	68	58	33	16	250	65
GFA60N	200	180	300	280	159	92	64	39	22	154	95
GFA60L	200	180	300	280	159	92	64	39	22	270	95

GFA Series

COMPARISON & SELECTION TABLE OF GFA MOVEMENT

MODEL	Dial Size (cm)	Dial Thickness (mm)	Hour Shaft Length (mm)	Hands Illumination	Operation	Buttons for Adjusting Hands
GFA12SFP	~ 120	~ 10	25	-	w/o Master	**
GFA12SFS	~ 120	~ 10	25	-	with Master	-
GFA12SFB	~ 120	~ 10	25	-	with or w/o Master	**
GFA12SHP	~ 120	~ 10	25	Enabled	w/o Master	**
GFA12SHS	~ 120	~ 10	25	Enabled	with Master	-
GFA12SHB	~ 120	~ 10	25	Enabled	with or w/o Master	**
GFA25NFP	120 ~ 250	~ 60	90	-	w/o Master	**
GFA25NFS	120 ~ 250	~ 60	90	-	with Master	-
GFA25NFB	120 ~ 250	~ 60	90	-	with or w/o Master	**
GFA25NHP	120 ~ 250	~ 60	90	Enabled	w/o Master	**
GFA25NHS	120 ~ 250	~ 60	90	Enabled	with Master	-
GFA25NHB	120 ~ 250	~ 60	90	Enabled	with or w/o Master	**
GFA25LFP	120 ~ 250	~ 200	230	-	w/o Master	**
GFA25LFS	120 ~ 250	~ 200	230	-	with Master	-
GFA25LFB	120 ~ 250	~ 200	230	-	with or w/o Master	**
GFA25LHB	120 ~ 250	~ 200	230	Enabled	with or w/o Master	**
GFA40NFP	250 ~ 400	~ 60	115	-	w/o Master	**
GFA40NFS	250 ~ 400	~ 60	115	-	with Master	-
GFA40NFB	250 ~ 400	~ 60	115	-	with or w/o Master	**
GFA40NHP	250 ~ 400	~ 60	115	Enabled	w/o Master	**
GFA40NHS	250 ~ 400	~ 60	115	Enabled	with Master	-
GFA40NHB	250 ~ 400	~ 60	115	Enabled	with or w/o Master	**
GFA40LFP	250 ~ 400	~ 200	263	-	w/o Master	**
GFA40LFS	250 ~ 400	~ 200	263	-	with Master	-
GFA40LFB	250 ~ 400	~ 200	263	-	with or w/o Master	**
GFA40LHB	250 ~ 400	~ 200	263	Enabled	with or w/o Master	**
GFA60NFP	400 ~ 600	~ 60	154	-	w/o Master	**
GFA60NFS	400 ~ 600	~ 60	154	-	with Master	-
GFA60NFB	400 ~ 600	~ 60	154	-	with or w/o Master	**
GFA60NHP	400 ~ 600	~ 60	154	Enabled	w/o Master	**
GFA60NHS	400 ~ 600	~ 60	154	Enabled	with Master	-
GFA60NHB	400 ~ 600	~ 60	154	Enabled	with or w/o Master	**
GFA60LFP	400 ~ 600	~ 200	270	-	w/o Master	**
GFA60LFS	400 ~ 600	~ 200	270	-	with Master	-
GFA60LFB	400 ~ 600	~ 200	270	-	with or w/o Master	**
GFA60LHB	400 ~ 600	~ 200	270	Enabled	with or w/o Master	**

GFC Series for 1 – 6 Meter Diameter

Three hands: Hour – Minute and Second



Available for 1 – 6 Meter diameter of Dial

- Micro-processor based self-setting movement
- Ideal for open-air tower clock system
- All metal fabric with stepping motor
- Remote control enabled
- Compact design with multiple functions

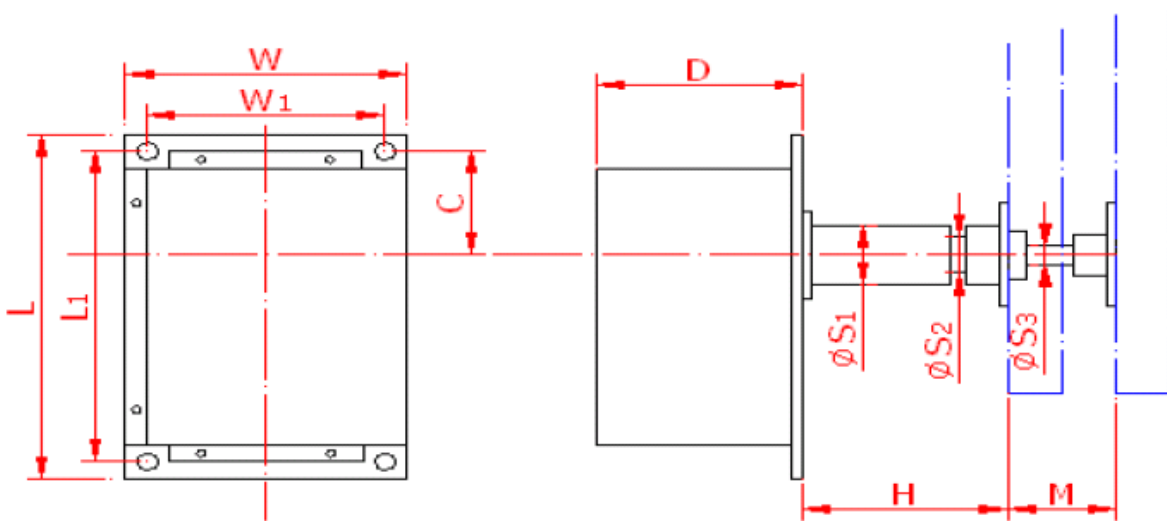
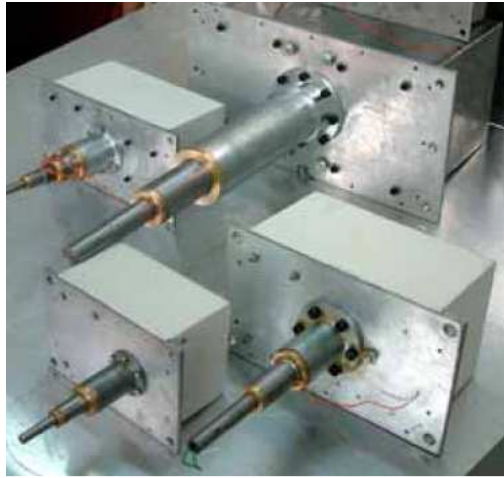
FEATURES

Microprocessor based open-air tower clock movement
Suitable for open-air dial diameter from 1.2m to 12m
Self-setting with master clock upon power recovery from failure
Controlled & synchronized by master clock or PC connected
Operation reservation upon power failure
High efficiency with low power consumption
Applicable with or w/o master clock and UT tower clock software

Clock Solutions

- OUTDOOR-USE DESIGN** : - Entirely metal fabric from internal parts to outer case
- Dust-proof, anti-rust, and weather-resistant
- LOW CONSUMPTION** : - Lower power consumption by 50%
- HIGH EFFICIENCY** : - Cylinder & gears design enables high efficiency with low abrasion
- SELF-SETTING** : - Automatically synchronized with master clock
- TIME RESERVATION** : - 3 months' operation reservation enables auto correction to master clock's time on power recovery from a mains power failure
- WIRING INTERFACE** : - Ordinary double-twisted pair wire
- RS485 output & input
- REMOTE OPERATION** : - Central supervised and controlled with master clock or PC
- No operation on movement needed
- Wiring distance to master clock or PC up to 1200m
- Feedback running status to master clock or PC
- TIME ACCURACY** : - 0.3 s/d at 25° (independent)
- HANDS ILLUMINATION** : - Hollow shafts design enables LED
- OTHER PARAMETER** : - Power supply DC 12V
- Shafts Hour & Minute & Second
- Working Temp. -30 – 85°
- Humidity 0 – 95%

DIMENSIONS



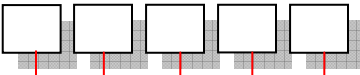
MODEL	W	W ₁	L	L ₁	D	C	S ₁	S ₂	S ₃	S ₄	H	M	S
GFC25N	130	110	260	240	115	120	43	33	21	11	90	50	50
GFC25L	130	110	260	240	115	120	43	33	21	11	230	50	50
GFC40N	150	130	330	310	130	155	57	42	30	16	115	95	95
GFC40L	150	130	330	310	130	155	57	42	30	16	263	95	95
GFC60N	200	180	410	384	159	192	100	64	39	22	154	95	95
GFC60L	200	180	410	384	159	192	100	64	39	22	270	95	95

GFC Series

COMPARISON & SELECTION TABLE OF GFC MOVEMENT

MODEL	Dial Size (cm)	Dial Thickness (mm)	Hour Shaft Length (mm)	Hands Illumination	Operation	Buttons for Adjusting Hands
GFC25NFP	120 ~ 250	~ 60	90	-	w/o Master	* *
GFC25NFS	120 ~ 250	~ 60	90	-	with Master	-
GFC25NFB	120 ~ 250	~ 60	90	-	with or w/o Master	* *
GFC25NHP	120 ~ 250	~ 60	90	Enabled	w/o Master	* *
GFC25NHS	120 ~ 250	~ 60	90	Enabled	with Master	-
GFC25NHB	120 ~ 250	~ 60	90	Enabled	with or w/o Master	* *
GFC25LFP	120 ~ 250	~ 200	230	-	w/o Master	* *
GFC25LFS	120 ~ 250	~ 200	230	-	with Master	-
GFC25LFB	120 ~ 250	~ 200	230	-	with or w/o Master	* *
GFC25LHB	120 ~ 250	~ 200	230	Enabled	with or w/o Master	* *
GFC40NFP	250 ~ 400	~ 60	115	-	w/o Master	* *
GFC40NFS	250 ~ 400	~ 60	115	-	with Master	-
GFC40NFB	250 ~ 400	~ 60	115	-	with or w/o Master	* *
GFC40NHP	250 ~ 400	~ 60	115	Enabled	w/o Master	* *
GFC40NHS	250 ~ 400	~ 60	115	Enabled	with Master	-
GFC40NHB	250 ~ 400	~ 60	115	Enabled	with or w/o Master	* *
GFC40LFP	250 ~ 400	~ 200	263	-	w/o Master	* *
GFC40LFS	250 ~ 400	~ 200	263	-	with Master	-
GFC40LFB	250 ~ 400	~ 200	263	-	with or w/o Master	* *
GFC40LHB	250 ~ 400	~ 200	263	Enabled	with or w/o Master	* *
GFC60NFP	400 ~ 600	~ 60	154	-	w/o Master	* *
GFC60NFS	400 ~ 600	~ 60	154	-	with Master	-
GFC60NFB	400 ~ 600	~ 60	154	-	with or w/o Master	* *
GFC60NHP	400 ~ 600	~ 60	154	Enabled	w/o Master	* *
GFC60NHS	400 ~ 600	~ 60	154	Enabled	with Master	-
GFC60NHB	400 ~ 600	~ 60	154	Enabled	with or w/o Master	* *
GFC60LFP	400 ~ 600	~ 200	270	-	w/o Master	* *
GFC60LFS	400 ~ 600	~ 200	270	-	with Master	-
GFC60LFB	400 ~ 600	~ 200	270	-	with or w/o Master	* *
GFC60LHB	400 ~ 600	~ 200	270	Enabled	with or w/o Master	* *

Movement Model Explanation

MOVEMENT For Open-Air Tower Clock		GF 
Hands Shafts Available		
Hour, Minute	A	
Hour, Minute, Second	C	
Dial Diameter (cm)		
60 – 120	12	
120 – 250	25	
250 – 400	40	
400 – 600	60	
Dial Thickness (mm)		
Up to 10 (only for GFA series)	S	
Up to 60	N	
Up to 200	L	
Illumination on Hands		
Disabled	F	
Enabled	H	
Operation		
Hands adjustment by pressing buttons on movement (Independent movement, not synchronized with master clock)	P	
Hands adjustment through master clock or PC software (Secondary movement)	S	
Hands adjustment through master clock or PC software as well as by pressing buttons on movement	B	

For Example:

GFA25NFS would be used for dial diameter up to 2.5m with hour and minute hand shafts, not supporting hands illumination and controlled and supervised through master clock or PC, and installed behind a dial with thickness less than 6 cm.